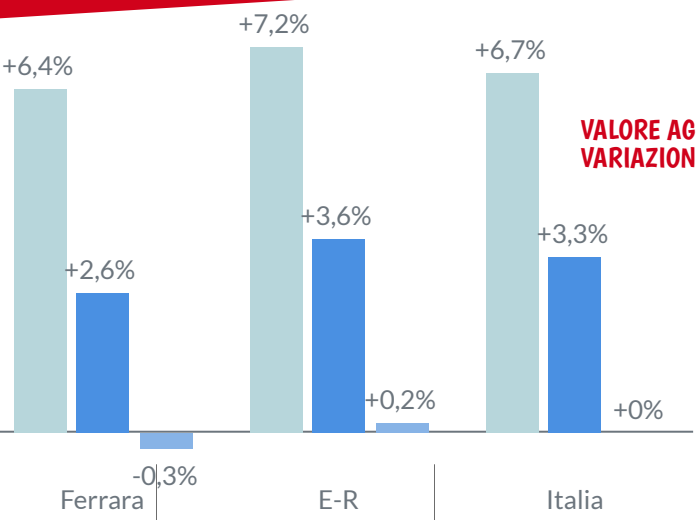
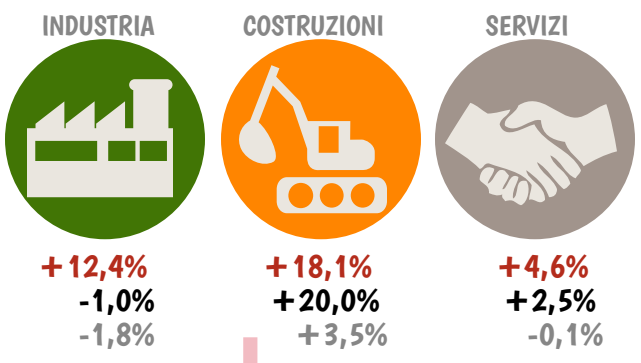




Scenari previsionali

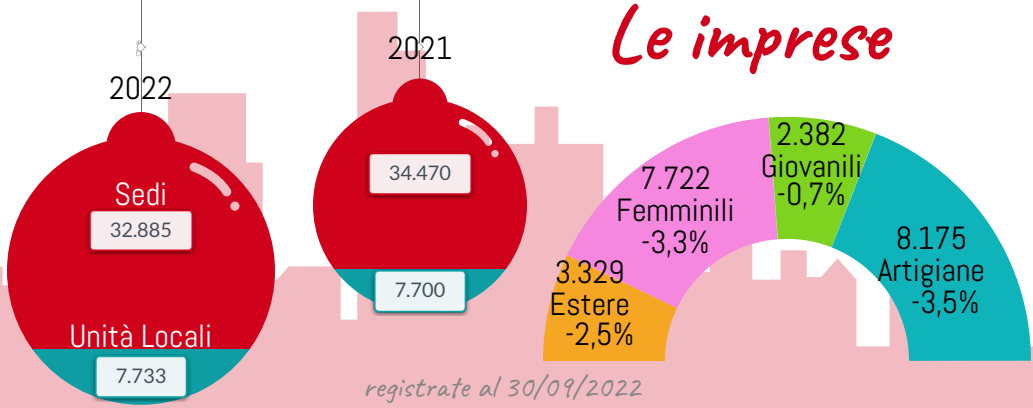


VALORE AGGIUNTO - VARIAZIONI ANNUALI PER SETTORI



Prometeia, ed. ottobre 2022

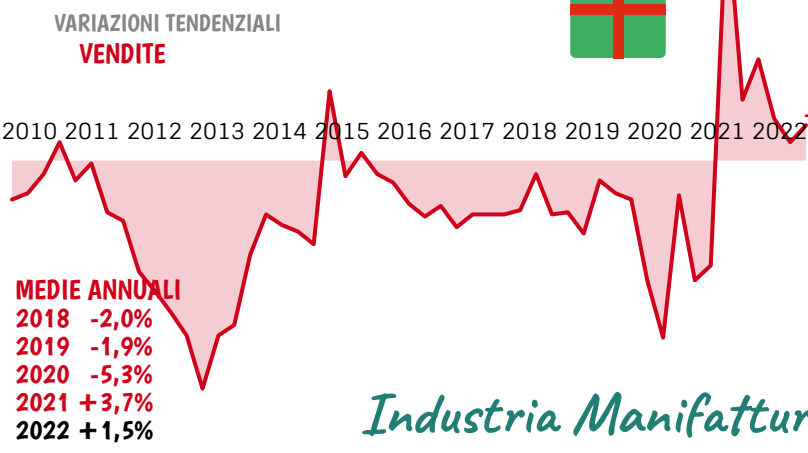
Le imprese



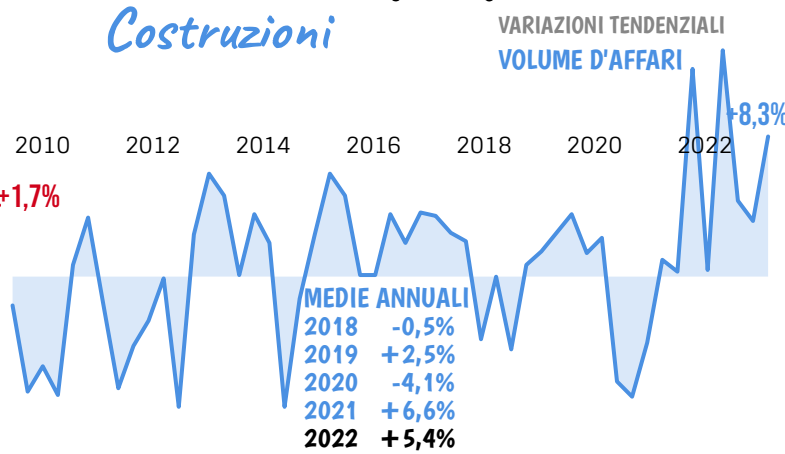
Primi 11 mesi



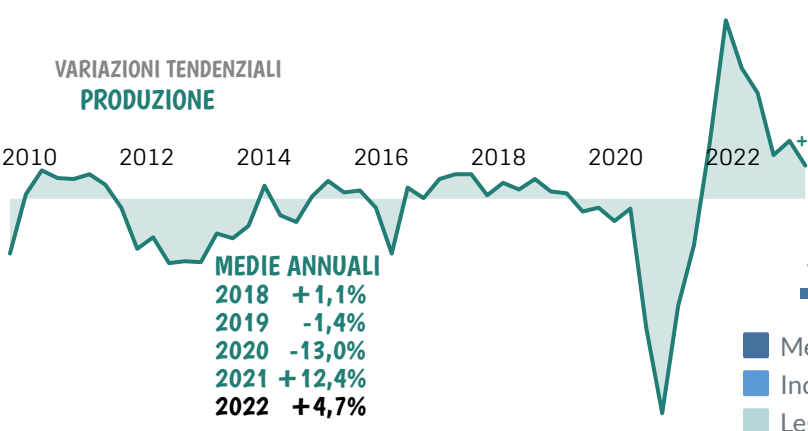
Commercio



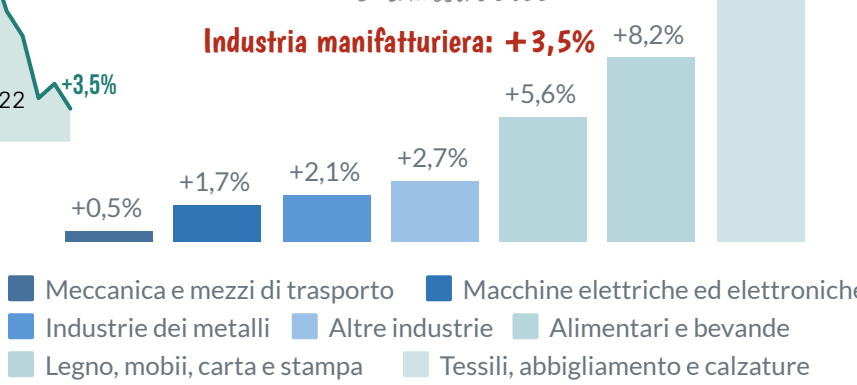
Costruzioni



Industria Manifatturiera



ANDAMENTI TENDENZIALI DELLA PRODUZIONE 3° trimestre 2022





3° trimestre 2022

Export ferrarese 2022

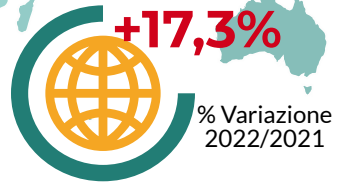
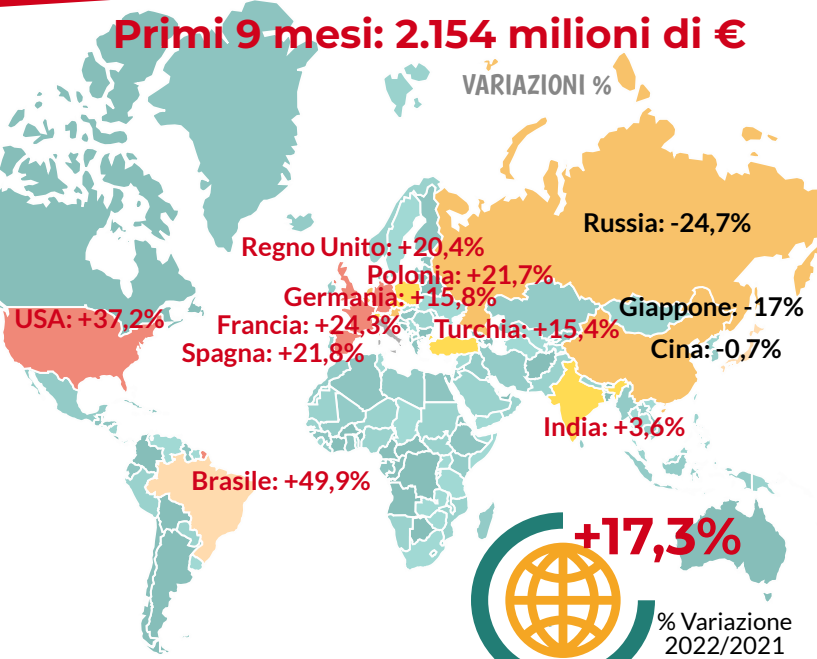
% SUL TOTALE



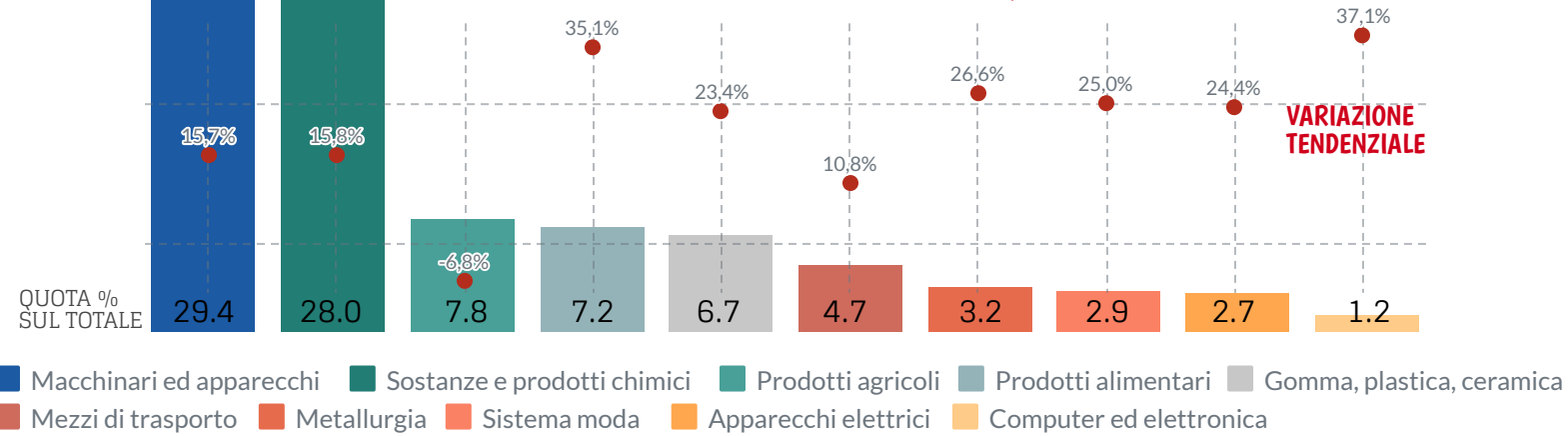
- Germania (17.66%)
- Stati Uniti (12.88%)
- Francia (12.52%)
- Spagna (4.86%)
- Cina (3.73%)
- Austria (3.7%)
- Regno Unito (2.72%)
- Polonia (2.67%)
- Belgio (2.54%)
- Turchia (2.19%)
- Paesi Bassi (2.13%)
- Svizzera (2.08%)
- Russia (1.94%)
- India (1.58%)
- Svezia (1.55%)
- Altri paesi (25.28%)

Primi 9 mesi: 2.154 milioni di €

VARIAZIONI %

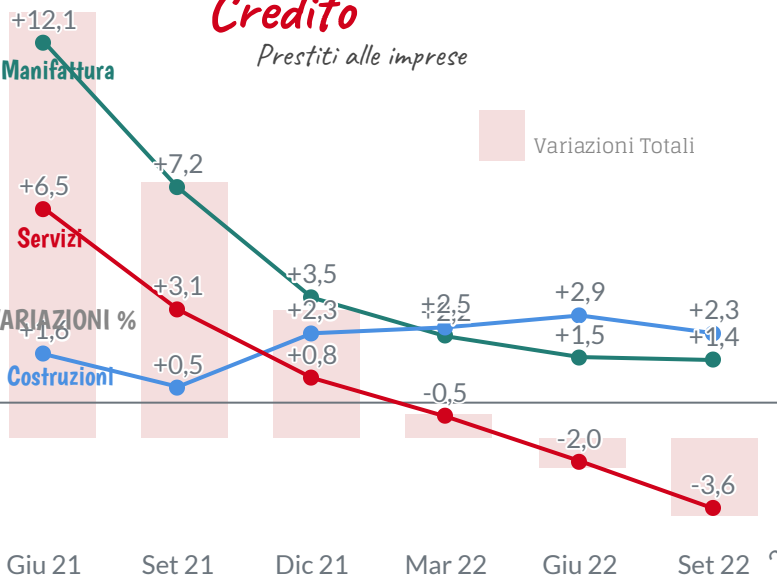


Contributo dei settori all'export totale



Credito

Prestiti alle imprese



Investimenti non finanziari per l'acquisto di macchine attrezzature, mezzi di trasporto e prodotti vari

